

Morgonkaffe

Andreas Hellkvist

Intro groove straight 8ths



A

5 F7#9

Musical staff for section A, measures 5-8. It features a treble clef, a key signature of one flat, and a 4/4 time signature. The melody includes a triplet of eighth notes in measure 5 and another triplet in measure 7.

9 Db7 G7b9 Gb13 F7#9

Musical staff for section A, measures 9-12. It features a treble clef, a key signature of one flat, and a 4/4 time signature. The melody is mostly rests, with some eighth notes in measure 9.

A1

13 F7#9

Musical staff for section A1, measures 13-16. It features a treble clef, a key signature of one flat, and a 4/4 time signature. The melody includes a triplet of eighth notes in measure 13 and another triplet in measure 15.

17 Db7 G7b9 Gb13 F7#9

Musical staff for section A1, measures 17-20. It features a treble clef, a key signature of one flat, and a 4/4 time signature. The melody is mostly rests, with some eighth notes in measure 17.

B

21 Bb9 F7#9 Bb9 Ab13 G7#5 C7#9

Musical staff for section B, measures 21-24. It features a treble clef, a key signature of one flat, and a 4/4 time signature. The melody consists of eighth notes with a consistent rhythmic pattern.

25 Bb9 F7#9 Bb9 Ab13 G7b9 C7#9

Musical staff for section B, measures 25-28. It features a treble clef, a key signature of one flat, and a 4/4 time signature. The melody consists of eighth notes with a consistent rhythmic pattern.

Break

C

29 F7#9

Musical staff for section C, measures 29-32. It features a treble clef, a key signature of one flat, and a 4/4 time signature. The melody includes a triplet of eighth notes in measure 29 and another triplet in measure 31.

33 Db7 G7b9 Gb13 F7#9

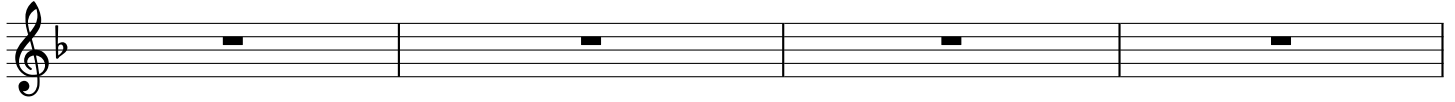
Musical staff for section C, measures 33-36. It features a treble clef, a key signature of one flat, and a 4/4 time signature. The melody is mostly rests, with some eighth notes in measure 33.

Solo form

37 F7#9



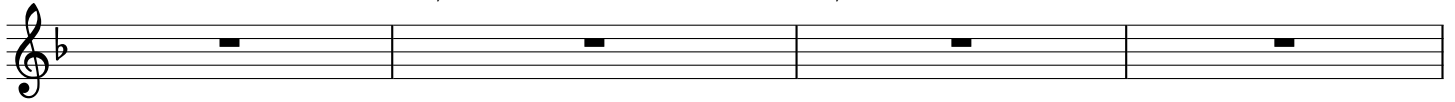
41 Db9 G7 Gb13 F7#9



45 F7#9



49 Db9 G7#5 Gb13 F7#9



53 Bb9 F7#9 Bb9 Ab13 G7#5 C7#9



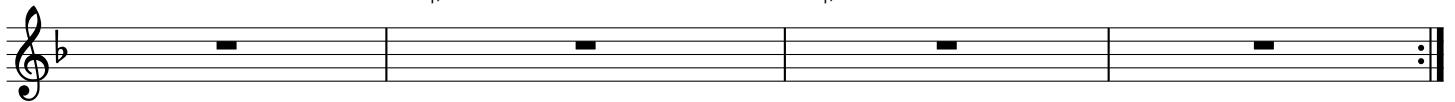
57 Bb9 F7#9 Bb9 Ab13 G7#5 C7#9



61 F7#9



65 Db9 G7#5 Gb13 F7#9



69 F7#9

73 Db9 G7#5 Gb13 F7#9

77 F7#9

81 Db9 G7#5 Gb13 F7#9

85 Bb9 F7#9 Bb9 Ab13 G7#5 C7#9 Markera

p *f*

89 Bb9 F7#9 Bb9 Ab13 G7b9 C7#9

Break

93 F7#9 Db7 G7b9 Gb13 F7#9

100 Db7 G7b9 Gb13 F7#9 Db7 G7b9 Gb13 F7#9